



Sterblue De Nantes à Los Angeles

A photograph showing a helicopter in flight on the left side of the frame, positioned near a large, red metal lattice tower of a high-voltage power line on the right. The helicopter's rotors are blurred, indicating motion. The tower's structure is complex, with many cross-braces. A power line with insulators hangs from the top of the tower. The background is a pale, overcast sky. A semi-transparent grey horizontal band is overlaid across the middle of the image, containing white text.

**Infrastructure inspections are costly
and dangerous...**



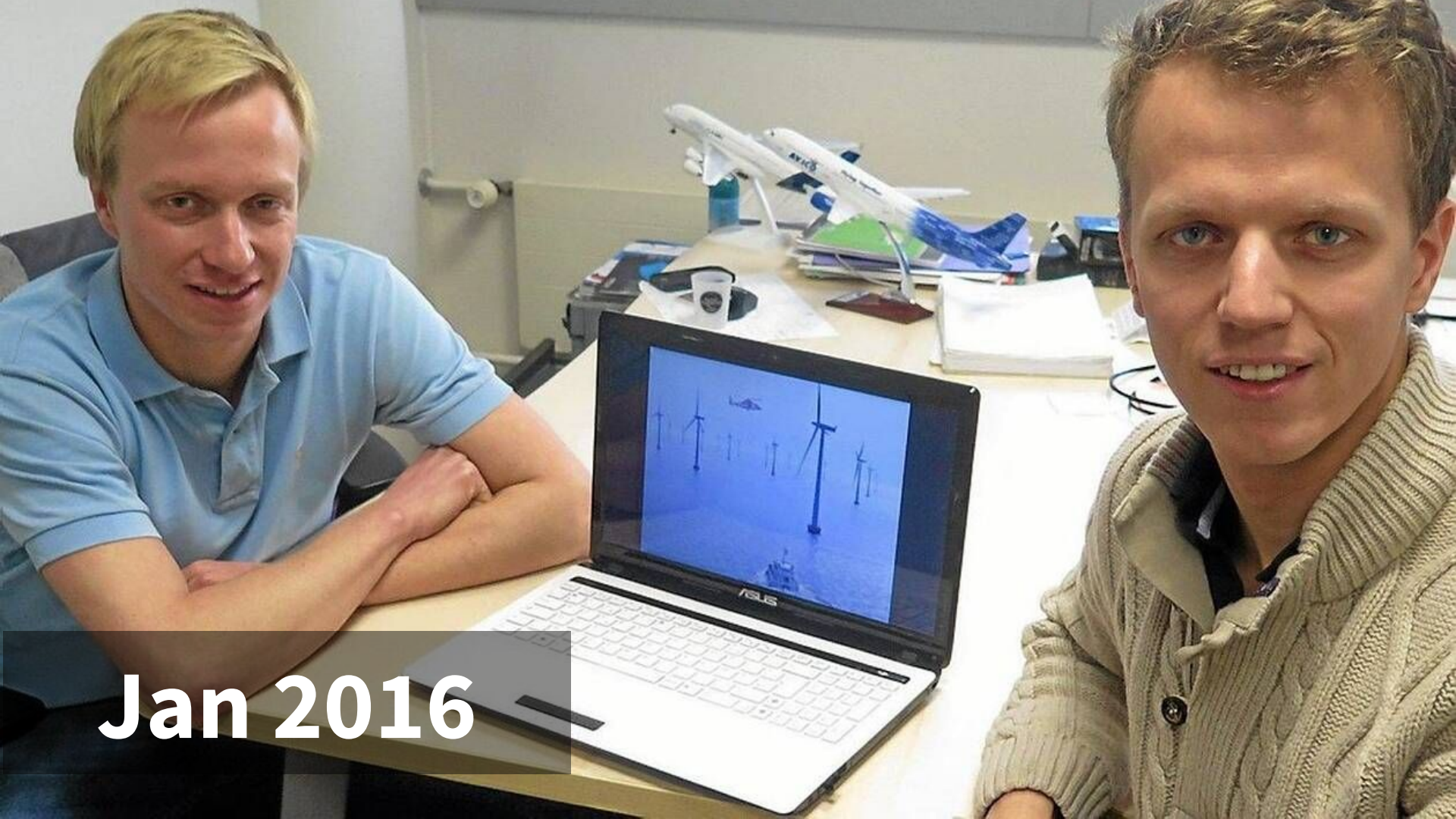
...But it is also necessary



...to monitor aging assets



...And to avoid billions in liabilities



Jan 2016



June 2016



August 2017



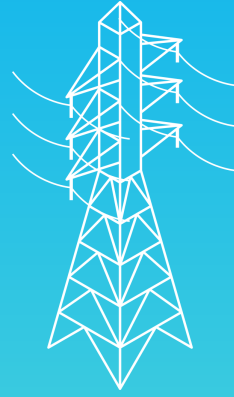
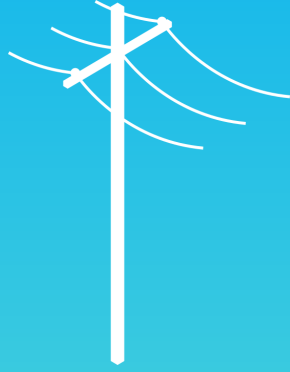
Avril 2018



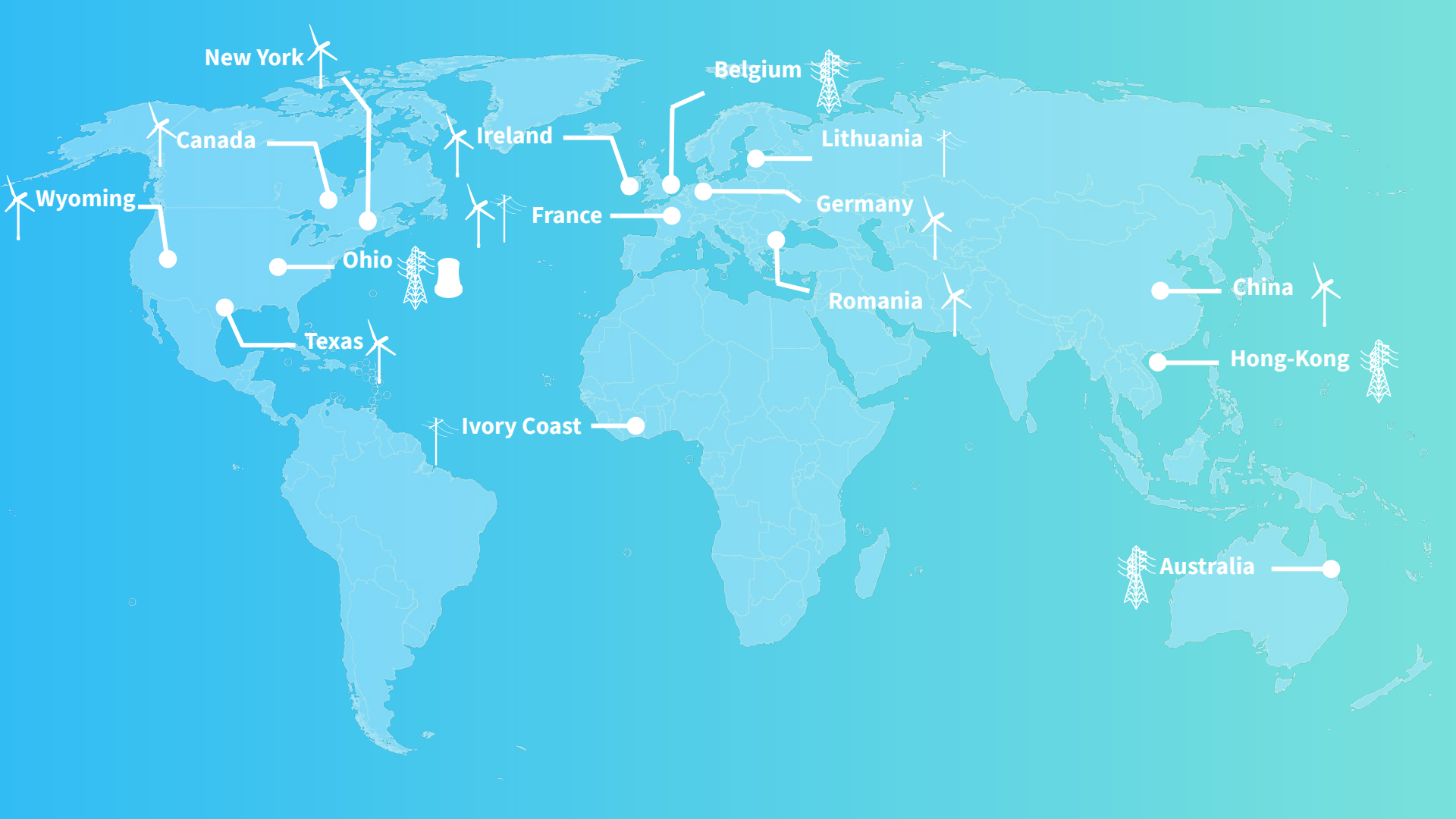
Combinator



Dec 2019



4 Applications Already Rolled Out



New York

Belgium

Canada

Ireland

Lithuania

Wyoming

France

Germany

Ohio

Romania

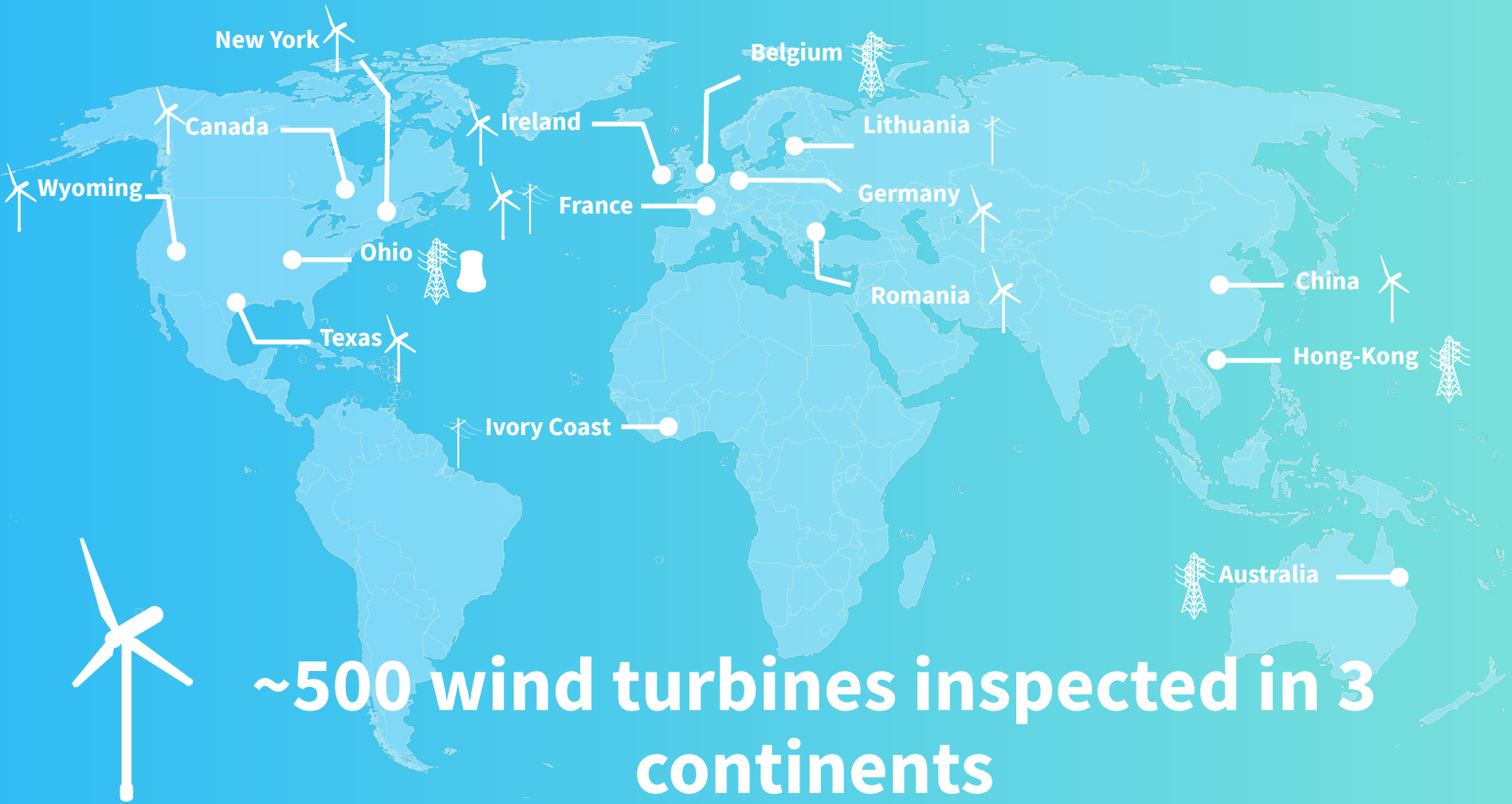
China

Texas

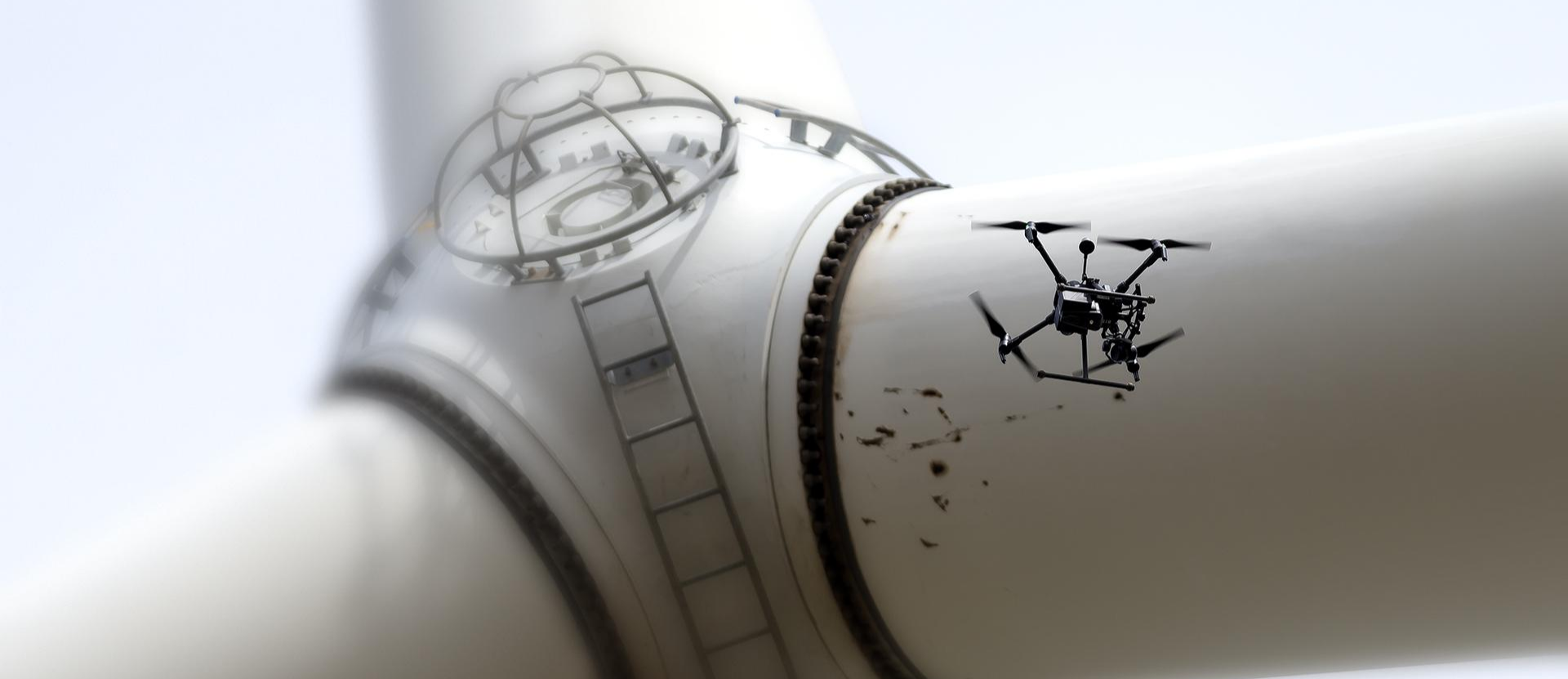
Hong-Kong

Ivory Coast

Australia



~500 wind turbines inspected in 3 continents



Automatic data capture

Controls Help <<

Image

This mission is validated, changes will not be applied.

h33103e15-DJI_0709.JPG
54 / 640 Total images

< Previous Next >

53 / 523 Quality images

< Previous Next >

Mission Quality

Tools

Pointer Eraser Trash Brush

Display Options Reset

- Names
- Detections
- Minimap

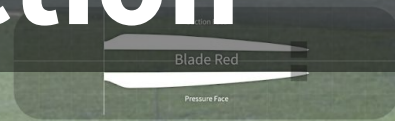
Contrast

Brightness



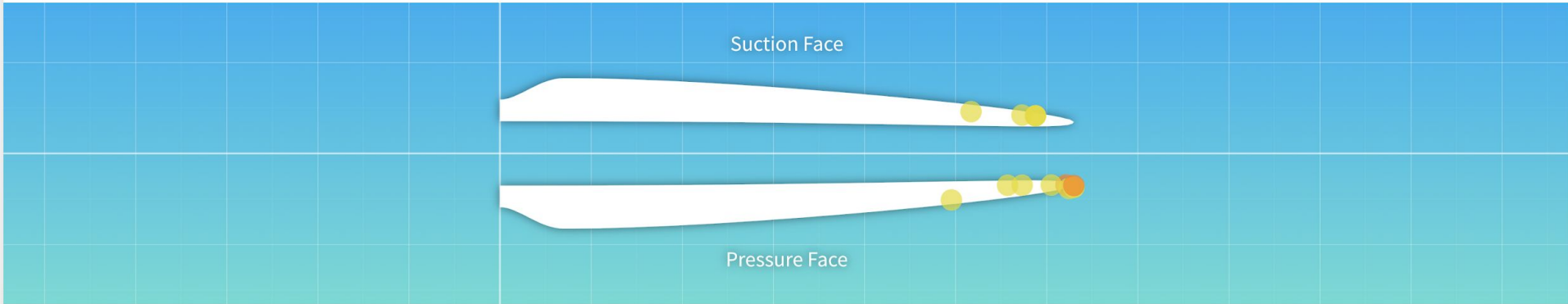
Automatic defects detection

Zoom Level : 29 %



Found 33 anomalies

Blade Blue



Found 14 anomalies



Minor (2/5)?
Other defect
Blade Blue



Online insightful analytics

Minor (2/5)?
Leading edge erosion
Blade Blue



Sync the real world with its digital twin



Sterblue, the Central Platform for Infrastructure Inspection